

# Traditional DSX-1 Systems

Copper :: 8 to 112 Terminations, Front and Rear Cross-Connect or Wall-Mount

## Overview

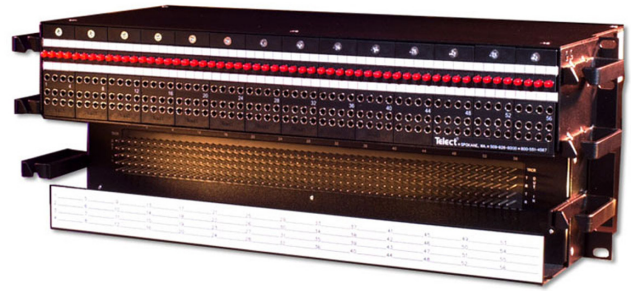
Telect traditional DSX-1 panels provide essential connectivity in configurations that fit legacy installations and help to increase termination density. With a comprehensive range of options available, there's a Telect traditional DSX-1 panel for virtually any application or standard.

## Primary Benefits

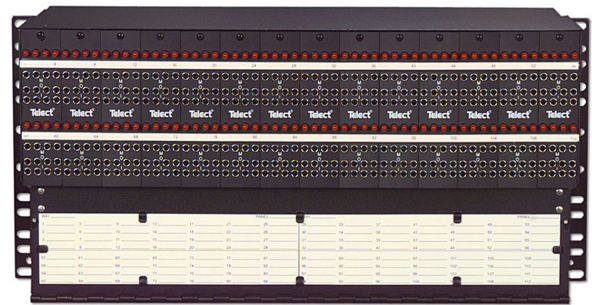
- Total front access, front or rear cross-connect
- Domino faceplate design simplifies jack access
- Segregated I/O fields and short path wiring help prevent crosstalk
- Dedicated Digital Jack™ ensures signal integrity
- Reversible mounting brackets fit 19-inch and 23-inch equipment racks, EIA or WECCO
- Lower capacities (8, 12, 28, 32 terminations) for low circuit count applications
- 112-circuit panel available for ultra high density
- Standard footprint panels provide a quality vendor alternative for legacy installations
- Backed by Telect's DSX lifetime warranty

## Applications

- High-density central office connectivity – bay lineups
- Low circuit count remote applications – individual panels



56-termination front cross-connect panel Telect  
part number 010-0156-0601



112-termination front cross-connect panel Telect  
part number 010-1120-0201



32-termination front cross-connect panel Telect  
part number 010-0132-0101



64-termination rear cross-connect panel Telect  
part number 010-2164-1003



12-term. wall-mount panel Telect part  
number 010-5012-0001

teammcauliffe@picstelecom.com | TELECOMCAULIFFE.com | office: 585.785.5472 | cell: 585.746.6383

# Traditional DSX-1 Systems

Copper :: 8 to 112 Terminations, Front and Rear Cross-Connect or Wall-Mount

## DSX-1 Jack Specifications

### Test Method

Dedicated Digital Jack Unless otherwise specified, all appropriate products are tested under MIL-J-641, method 202F

### Electrical

Insertion loss < -0.5 dB (at 1.576 MHz)

Crosstalk < -60 dB

Return loss < -26 dB at 772 kHz

Monitor level 21 dB +/-1.5 dB below signal level

Contact resistance < 0.01 ohms

Characteristic impedance 100 ohms

### Mechanical

Insertion force 4.17 lb (1.9 kg) average

Withdrawal force 5.21 lb (2.4 kg) average

Life Minimum 20,000 insertion/withdrawal cycles

Vibration Per MIL-STD-202F, method 201A

### Environmental

Salt spray Per MIL-STD-202F, method 101D

Moisture resistance Per MIL-STD-202F, method 106E

Thermal limits -40 to 149°F (-40 to 65° C) operating  
-67 to 185°F (-55 to 85° C) non-operating

Thermal shock Per MIL-STD-202, method 107D

Humidity 0 to 95% operating and non-operating

## Accessories

Description	Part Number
Single conductor Blue Nickel™ patch cord	040-1000-xxx (xxx=feet)
Dual conductor Blue Nickel™ patch cord	040-2000-xxx (xxx=feet)
Looping plug	040-3000-0000RC
100-Ohm Bantam terminating plug	040-5000-0100
5-Conductor cross-connect wire, 1000 ft.	060115RC
Bantam circuit guard plug, white	101222-2
Bantam circuit guard plug, red	101222-3
“Phoney” plug, black	101235-1
“Phoney” plug, red	101235-3

## Ordering Information

All panels are front cross-connect and black in color unless noted.

Description	Part Number
<b>8-Termination Wall-Mount Panels</b>	
Wire-wrap, -48V LEDs	010-5008-0001
<b>12-Termination Wall-Mount Panels</b>	
Wire-wrap, no LEDs	010-5012-0000
Wire-wrap, -48V LEDs	010-5012-0001
Wire-wrap, -24V LEDs	010-5012-0003
<b>28-Termination Panels</b>	
Wire-wrap, -48V LEDs	010-0128-0101
Connectorized, -48V LEDs	010-0128-0115
Wire-wrap, +24V LEDs	010-0128-0127
<b>32-Termination Panels</b>	
Wire-wrap, -48V LEDs	010-0132-0101
Connectorized, -48V LEDs	010-0132-0104
Wire-wrap, no LEDs	010-0132-0132
<b>56-Termination Panels</b>	
Wire-wrap, -48V LEDs, des. 1-56	010-0156-0601
Connectorized, -48V LEDs, des. 1-28AB	010-0156-0610
Connectorized, -48V LEDs, des. 1-28AB and 29-56	010-0156-0615
Connectorized, -48V LEDs, des. 1-56	010-0156-0619
Wire-wrap, -48V LEDs, des. 1-28AB	010-0156-0625
Wire-wrap, +24V LEDs, des. 1-56	010-0156-0635
Wire-wrap, -48V LEDs, des. 1-28AB, L-R I/O field	010-0156-0654
<b>64-Termination Panels</b>	
Rear cross-connect, wire-wrap, -48V LEDs	010-2164-1003
Front cross-connect, wire-wrap, -48V LEDs	010-0164-1603
<b>112-Termination Panels</b>	
Wire-wrap, -48V LEDs, white	010-1120-0001
Wire-wrap, -48V LEDs, black	010-1120-0201

teammcauliffe@picstelecom.com | TELECOMCAULIFFE.com | office: 585.785.5472 | cell: 585.746.6383

EQUIPMENT  
FOR SALE

# TELECT DSX-1 EQUIPMENT

# Telect®

## 010-4004-0000

Telect DSX 4000 Module



✓ REDUCING LEADTIMES

✓ COST SAVINGS

✓ LIFETIME WARRANTY

**Contact Today  
For Current  
Inventory**

Visit [TELECOMCAULIFFE.com](http://TELECOMCAULIFFE.com)

**PICS**

**TELECOMCAULIFFE**

A PICS TELECOM TEAM

**BILL MCAULIFFE**

*Director of Sales – National Accounts*

[TEAMMCAULIFFE@PICSTELECOM.COM](mailto:TEAMMCAULIFFE@PICSTELECOM.COM) | 585.746.6383 | [TELECOMCAULIFFE.COM](http://TELECOMCAULIFFE.COM)