

## EKINOPS360 Chassis

### Modular Multireach Transport Platform

DATA SHEET 08 | 2025

#### KEY FEATURES & BENEFITS

- Modular architecture eases scalability
- Any card-any slot approach simplifies network designs
- Supports service modules and photonic modules in the same chassis to reduce footprint requirements
- Line rate agnostic from 1G to 800G—and beyond—prevents system obsolescence
- Modules compatible with all chassis for complete platform interoperability
- Extended Temperature Range (ETR) capability for harsh environments
- 300mm depth meets telco standard
- NEBS and ETSI compliant for central office deployment
- Front-to-back airflow for data center deployment (C700HC)

#### OVERVIEW

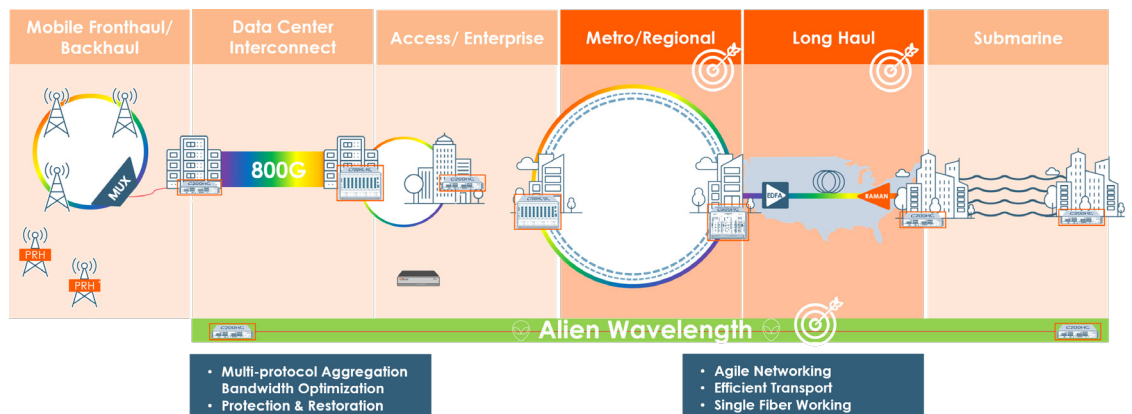
The Ekinops360 Dynamic Multireach Transport platform is a highly versatile and efficient optical transport system that delivers multirate, multiprotocol and multireach capability in a single chassis. Deployed for over a decade in networks across the globe, the Ekinops360 has been the vehicle enabling the migration first to 10G, then to 100G and 200G and now to 800G. Used by service providers—including wireless providers, cable operators, research and education institutions and enterprises alike, it is deployed in every transport application possible from access to ultra-long haul and even submarine connectivity. It can be deployed in outdoor cabinets or other unconditioned spaces at cell towers or in remote amplifier huts. As a single platform using common hardware, software and management, the Ekinops360 provides a complete end-to-end solution that is simple to deploy, operate and manage.

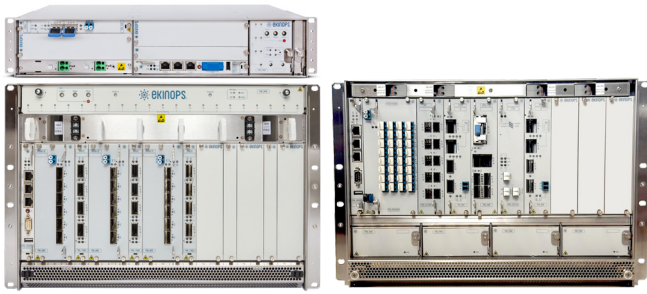
With its “evergreen” design, it can easily transition between technology eras—10G, 100G, 800G, etc.—and even support multiple eras at the same time providing the most efficient method for accommodating higher line rates and new technologies. With its modular architecture, an Ekinops360 chassis can be configured and reconfigured to match the service profile as needed and opportunity arises. Unlimited by fixed backplane speed, the Ekinops360 platform has enabled service providers to scale from 800 Gbps to over 38 Tbps without having to light another fiber pair or replace a single chassis.

Consisting of four rack mountable chassis types in 7 rack unit (RU) and 2RU form factors each 300mm deep and NEBS and ETSI compliant, the Ekinops360 platform meets the strictest telco operational and safety requirements for deployment in any network. Extended temperature range operation from -40°C to +65°C allows deployment in the harshest conditions (requires ETR-specific modules including transponder, amplifier, management card and fan unit).

#### APPLICATIONS

- Long Haul & ULH Transport
- Metro/Regional Transport
- Data Center Interconnection
- Submarine Transport
- Alien wavelength
- Single fiber networks
- Extended temperature environments

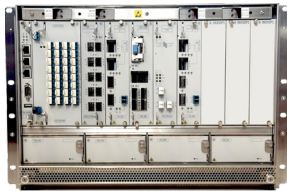




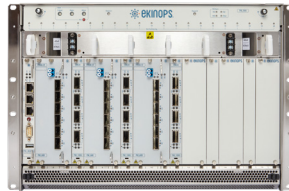
## EKINOPS360 Chassis

### Modular Multireach Transport Platform

#### FEATURES



**ekinops C700<sup>HC</sup>**



**ekinops C600<sup>HC</sup>**



**ekinops C200<sup>HC</sup>**



**ekinops C200<sup>HC-ETR</sup>**

	<b>ekinops C700<sup>HC</sup></b>	<b>ekinops C600<sup>HC</sup></b>	<b>ekinops C200<sup>HC</sup></b>	<b>ekinops C200<sup>HC-ETR</sup></b>
Height	7RU (310 mm / 12.2 in)	7RU (310 mm / 12.2 in)	2RU (87 mm / 3.4 in)	2RU (87 mm / 3.4 in)
Width	442 mm / 17.4 in	442 mm / 17.4 in	442 mm / 17.4 in	442 mm / 17.4 in
Depth	269 mm / 10.7 in	269 mm / 10.7 in	269 mm / 10.7 in (DC version) 442 mm / 17.7 in (AC version)	269 mm / 10.7 in
Weight	12.1 kg / 26.5 lbs	11.2 kg / 24.7 lbs	6.1 kg / 13.4 lbs (DC version) 11.8 kg / 26.0 lbs (AC version)	6.1 kg / 13.4 lbs
Slot Count	20	20	6	6
Power Voltage	-48 VDC, 110/220 VAC	-48 VDC	-48 VDC or AC option	-48 VDC
Power Consumption (empty)	410W	60 W	DC: 60 W AC: 72 W	45 W
Power Consumption (max. loaded)	2000W	1000 W	500 W	150 W
Fuse Rating	20 amp	40 amp	20 amp	5 amp
NEBS	Yes	Yes	Yes	Yes
ETSI	Yes	Yes	Yes	Yes
Mounting	ETSI, 19 in / 23 in	ETSI, 19 in / 23 in	ETSI, 19 in / 23 in	ETSI, 19 in / 23 in
Operating Temperature	0°C to +50°C +32°F to +122°F	0°C to +50°C +32°F to +122°F	0°C to +50°C +32°F to +122°F	-40°C to +65°C -40°F to +149°F
Management Card	PM_MNGT4-2	PM_MNGT4-2	PM_MNGT4-2	PM_MNGT4-2-ETR

#### ORDERING INFORMATION

##### EKINOPS CHASSIS

PRODUCT CODE	DESCRIPTION
C700HC	High Capacity modular chassis 7RU
C600HC	High Capacity modular chassis 7RU
C200HC	High Capacity modular chassis 2RU
PM_MNGT4-2	Management card
C200HC-ETR	High Capacity modular chassis 2RU Compatible with Extended Temperature Range
PM_MNGT4-2-ETR	Management card compatible with -48V & Extended Temperature Range
400EEM	Ekinops Craft Interface Software

#### CONTACT



[www.ekinops.com](http://www.ekinops.com)

Ekinops EMEA  
sales.eu@ekinops.com

Ekinops APAC  
sales.asia@ekinops.com

Ekinops Americas  
sales.us@ekinops.com

**EQUIPMENT  
FOR SALE**

# EKINOPS360 DYNAMIC OPTICAL TRANSPORT EQUIPMENT

## C200/C200HC | C600/C600HC

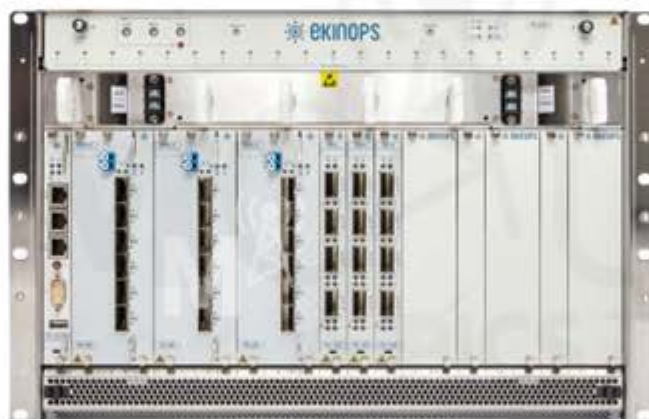


WDM Transport Solutions for Optical Networking  
Applications from Network Edge to Carrier Core

Ekinops360 consists of Ekinops high-capacity WDM transport managed through Celestis NMS, Ekinops advanced network management system. The Ekinops360 product line delivers active and passive DWDM and CWDM solutions for all transport applications from short reach enterprise, access and data center interconnection (DCI) to metro, regional long haul, ultra-long haul and even submarine distances with line rates from 1G to 800G and beyond.



C200/C200HC



C600/C600HC

**Contact Today**  
For Current Inventory

Visit [TELECOMCAULIFFE.com](http://TELECOMCAULIFFE.com)

- ✓ REDUCING LEADTIMES
- ✓ COST SAVINGS
- ✓ LIFETIME WARRANTY
- ✓ SUSTAINABLE SOLUTIONS



**BILL MCAULIFFE**  
Director of Sales – National Accounts

TEAMMCAULIFFE@PICSTELECOM.COM | 585.746.6383 | TELECOMCAULIFFE.COM